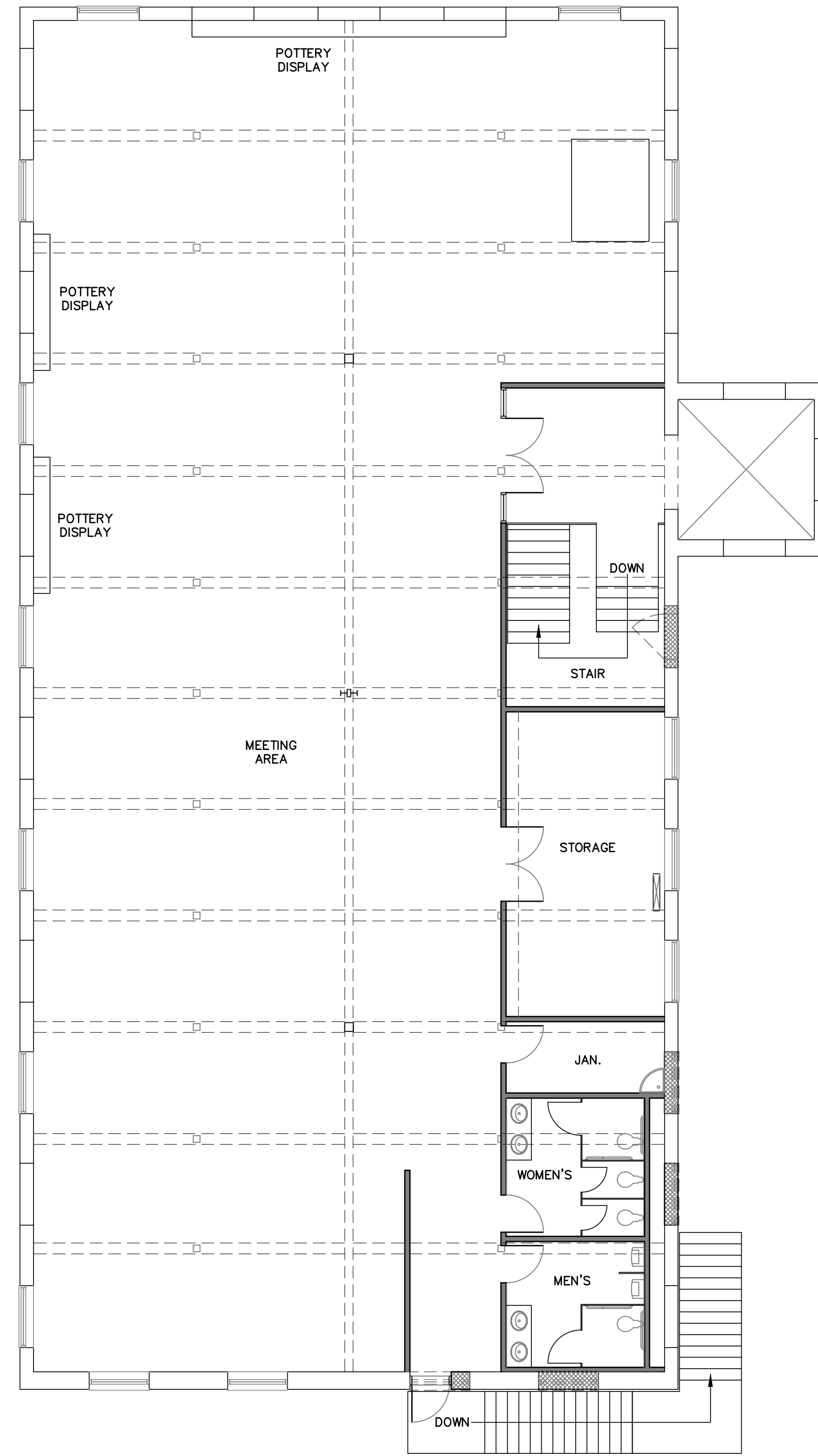
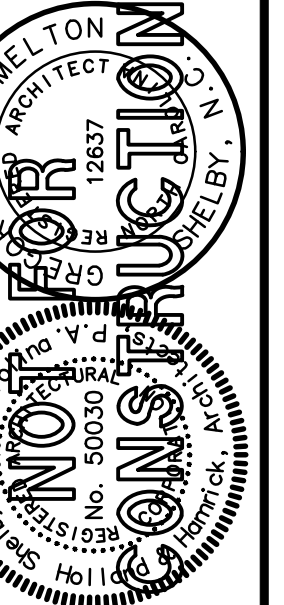


**PROPOSED FIRST FLOOR PLAN**  
1/8" = 1'-0"



**PROPOSED SECOND FLOOR PLAN**  
1/8" = 1'-0"

CONSULTANT



222 N. LAFAYETTE ST., SUITE 21  
SHELBY, NORTH CAROLINA 28160  
ph. (704) 487-8578  
fax (704) 487-8579  
AIA  
WWW.H-HARCHITECTS.COM

**HOLLAND  
HAMRICK**  
ARCHITECTS, P.A.

PROJECT TITLE  
**ALTERATIONS TO THE  
HISTORIC EUREKA MILL  
for PIEDMONT COMPANIES, INC.**  
Lincolnton, North Carolina

CONTRACT NO.  
2342  
DATE  
4-24-18  
REVISED

SHEET  
**A1.1**  
3 OF X